

# Safeguarding Arrangements at Ashbrook Junior School

- ▶ Please read and keep up to date with the latest information in the Safeguarding folder. For information, advice and key documents have a look on: [www.derbyshirescb.org.uk](http://www.derbyshirescb.org.uk) If you are concerned in any way about the safety, wellbeing or care of a child, speak to:



**Mrs S Dell**  
Senior Designated  
Safeguarding Lead



**Mrs H Tarrant**  
Deputy Designated  
Safeguarding Lead



**Mrs B Johnstone**  
Deputy Designated  
Safeguarding Lead



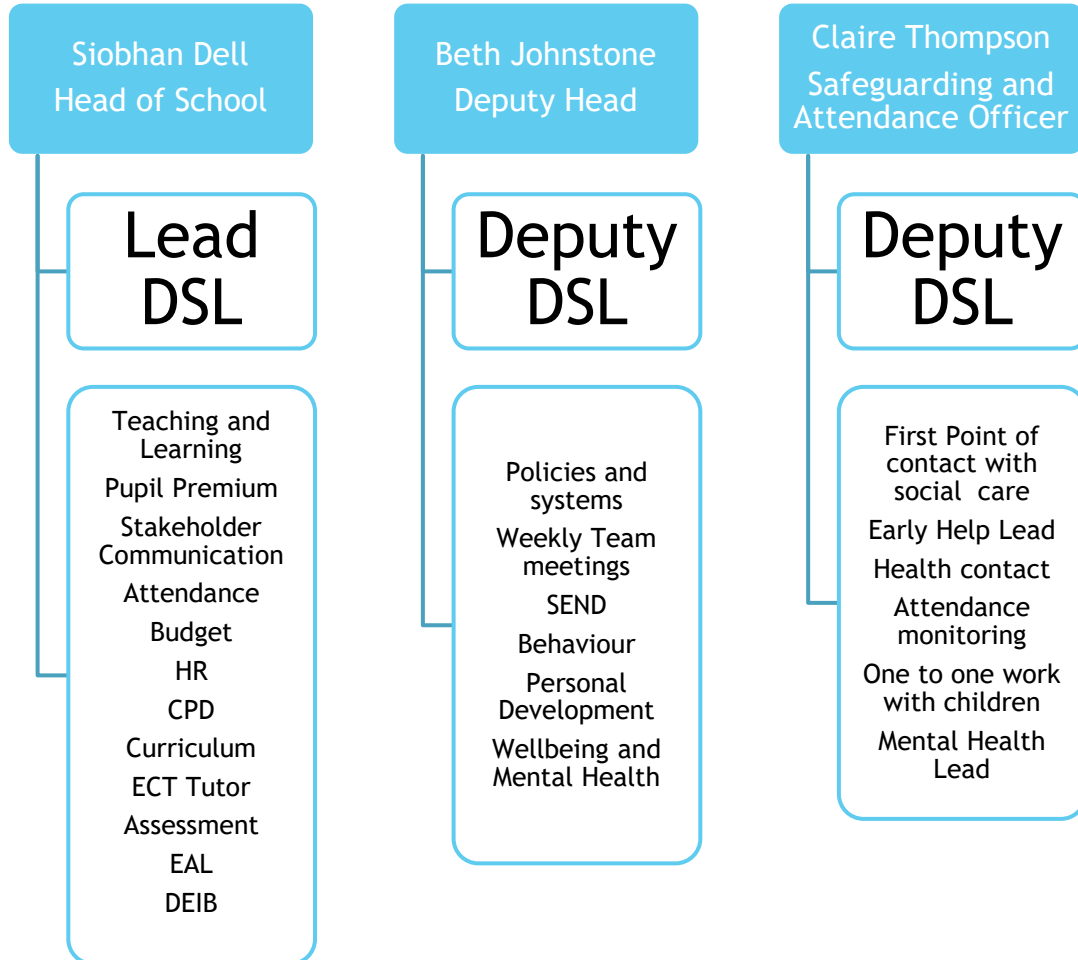
**Mrs C Thompson**  
Deputy Designated  
Safeguarding Lead



**Mrs P Wood**  
Safeguarding  
Governor

Email: [safeguarding@ashbrook-jun.derbyshire.sch.uk](mailto:safeguarding@ashbrook-jun.derbyshire.sch.uk)

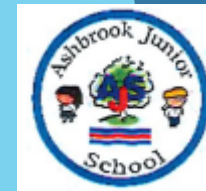
# Safeguarding Structure Ashbrook Junior School September 2025



## Wider Safeguarding Team

- Safeguarding Governor: *Pippa Wood*
- Additional Deputy DSL: *Beth Johnstone*
- Named first aid lead: *Lynsey Priestly*
- Online safety: *Sam Huntingdon*
- Health and safety: *Lisa Varty*
- Site safety: *Lisa Varty*
- Training Safeguarding Records Admin: *Sam Whittaker*

# Safeguarding Structure Ashbrook Junior School September 2025



Monitoring - concerns, school procedure and practice		
Daily	Communication between DSL and deputies. Monitoring MyConcern and sharing information. Discussion with agencies as appropriate.	Visitors: Electronic signing, ID checks, safeguarding information shared.
Weekly	DSL meetings to share updates. Half termly or termly Key staff informed on relevant children and cases. Reviewing L4 cases and any outstanding	
Half termly or termly	Safeguarding team members attend safeguarding meetings. Supervision for staff. Updating training.	Supply staff: Induction and verbal information in relation to safeguarding and school procedures. Attendance reviewed and parents contacted.
Annually	Updating mandatory safeguarding training through TES Develop.	
Transform Trust	Half termly desktop review of MyConcern by Claire Smith Trust Advanced DSL.	